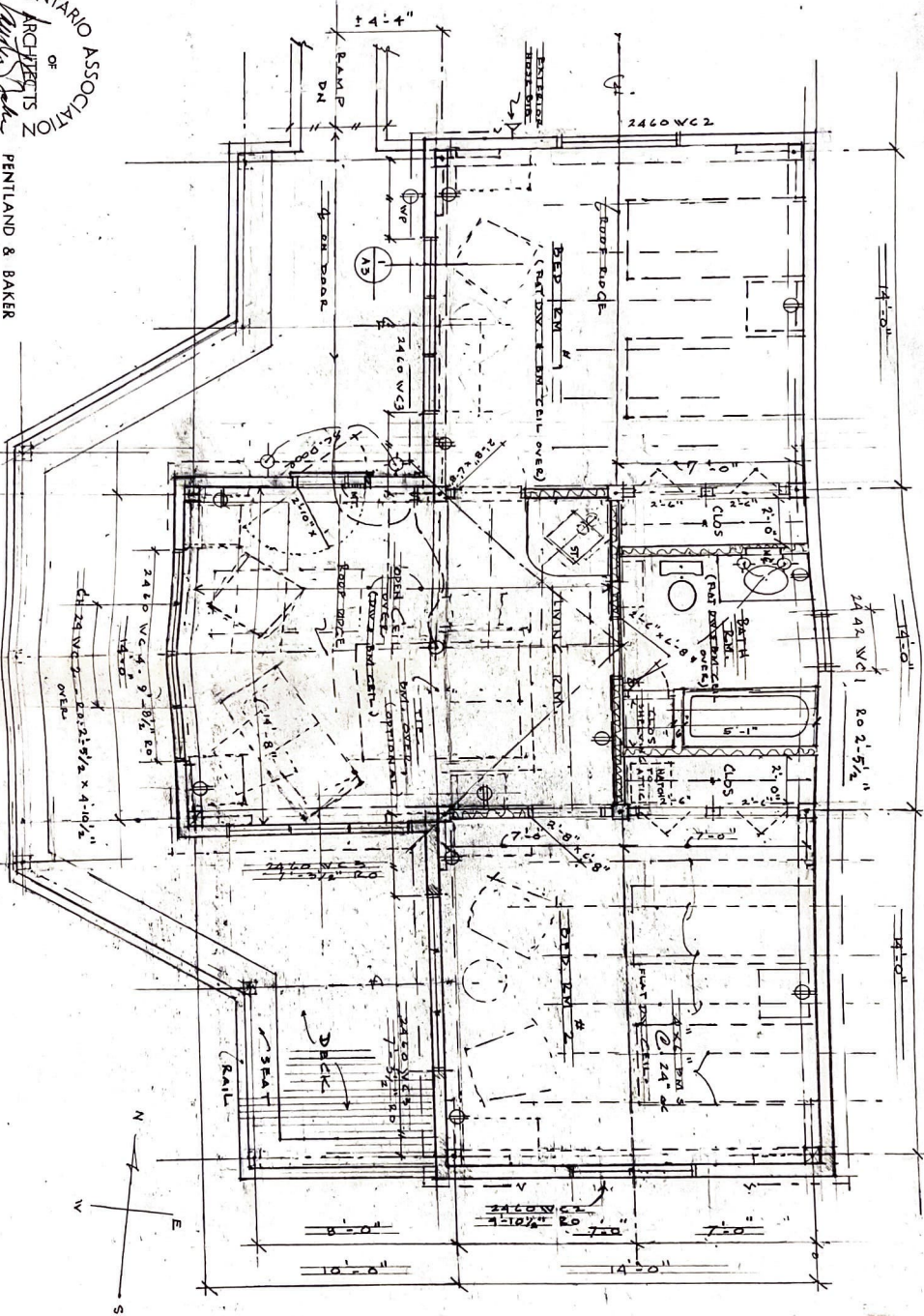


PRELIMINARY



PENTLAND & BAKER ARCHITECTS

SENT MAY 19 19 89
5 MAY 19 89
89 1172



FLOOR PLAN

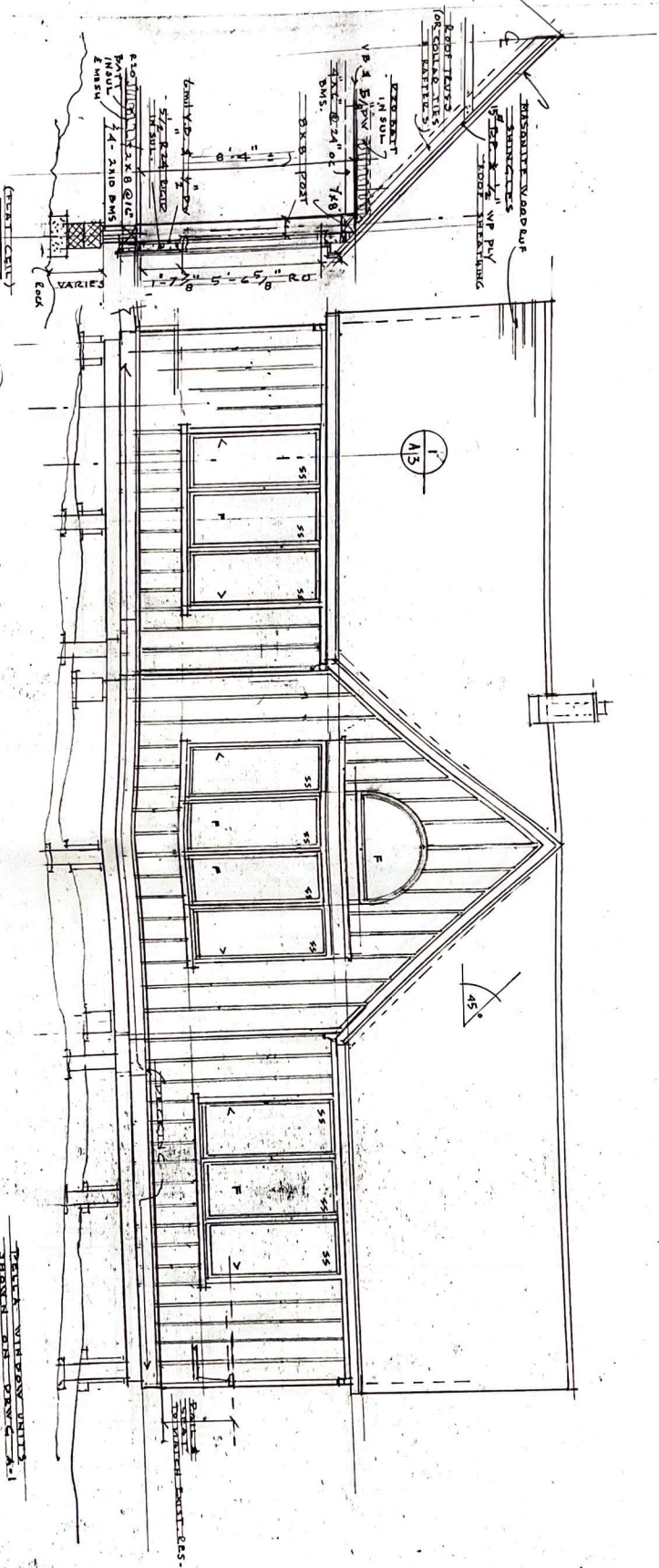
AI

CONTRACT FOR MR. JOHN V. HARRISON
1000 AVENUE CENTRAL



PENTLAND & BAKER
ARCHITECTS

REV. 11 MAY 1989
2 MAY 1989
09-1172



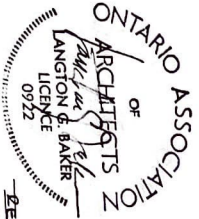
SECTION K
1/4" = 1'-0"
AS

ENTER ABOVE
CONSTRUCTION
DRAWING
PROJECT 85-113-0

TRUCK WINDOW UNITS
55" HIGH ON DRAWING
COVERED EXTERIOR SHIMSHADE,
SCREENS AND FINISH SASH.

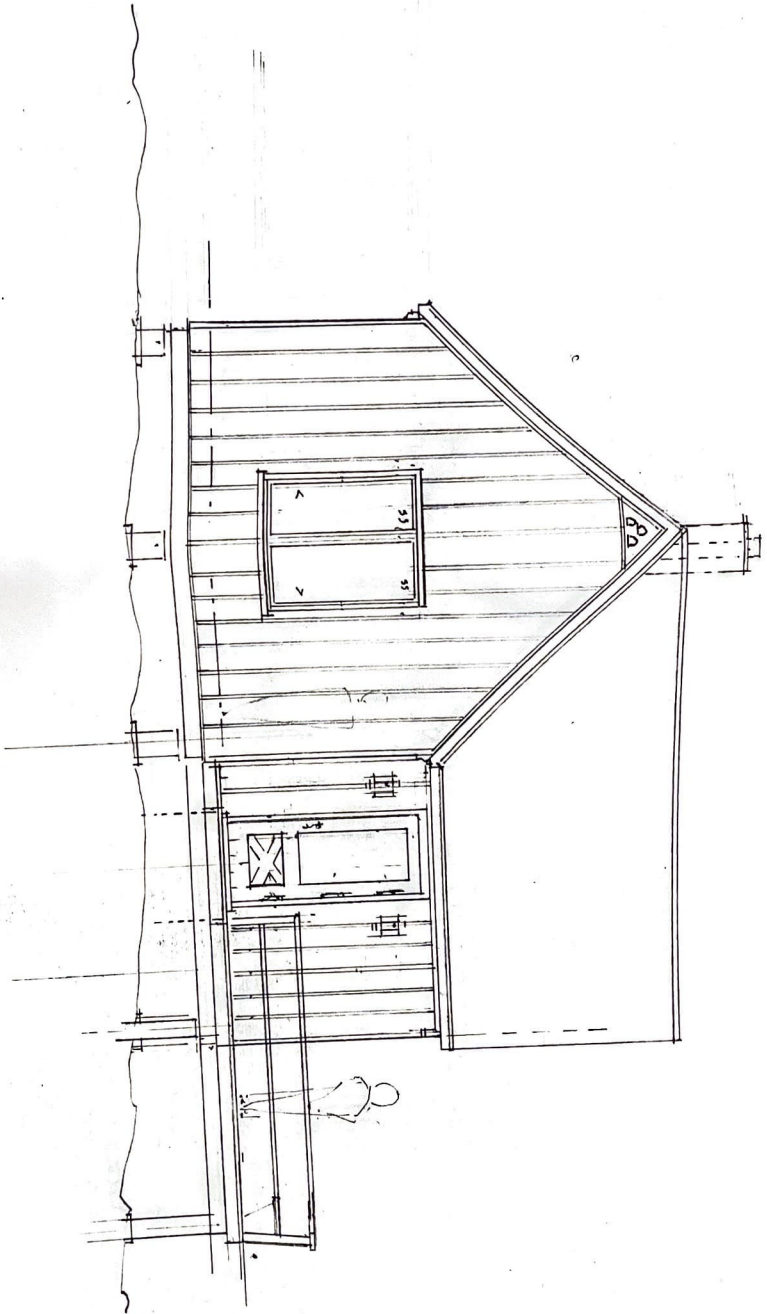
WEST ELEVATION
1/4" = 1'-0"

AS



PENTLAND & BAKER
ARCHITECTS

REVISED 1989
3 MAY 1989
891172



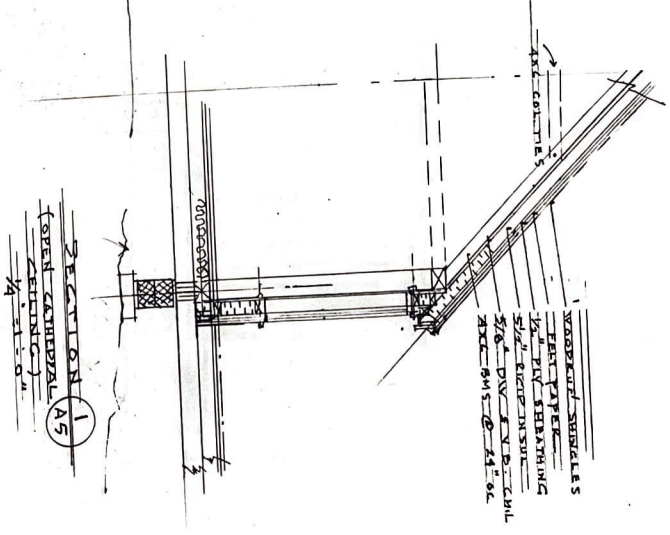
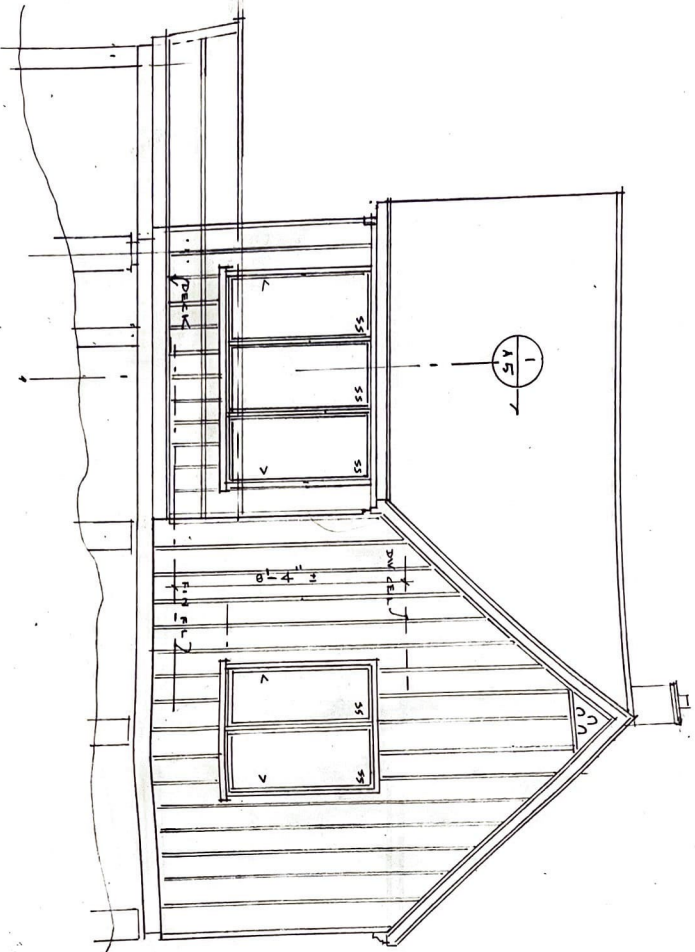
NORTH ELEVATION
1/4" = 1'-0"

AA



PENTLAND & BAKER
ARCHITECTS

PERMITTED TO BE
3 MAY 1989
8 5 11/72



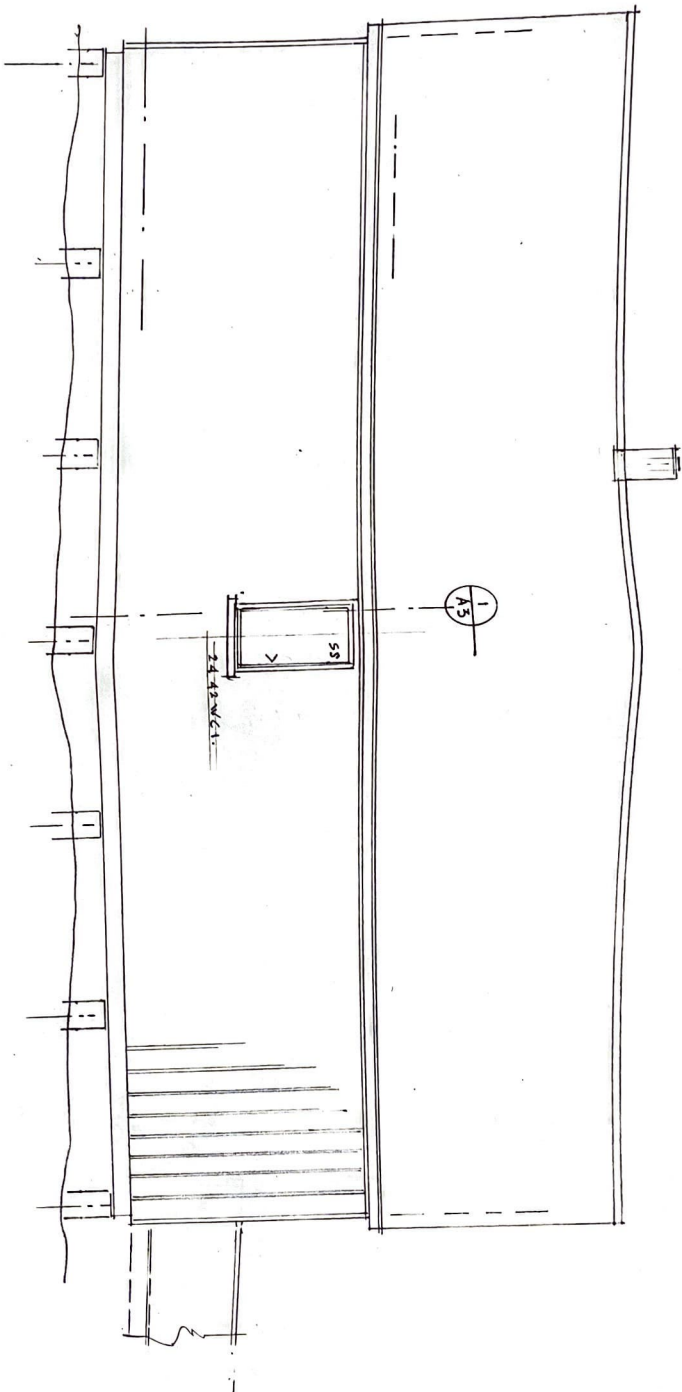
- 1 WOODSHAKE SHINGLES
- 1 PLY
- 1/2" DIV SHEATHING
- 3/4" RIGID INSUL
- 3/8" DIV EXTERIOR
- EXTERIOR FINISH

SOUTH ELEVATION
1/4" = 1'-0"





PENTLAND & BAKER
ARCHITECTS



REV. 11 MAY 1989
5 MAY 1989
8 9 11/72

EAST ELEVATION
1/4" = 1'-0"
A-6